

# ENVIRONMENT CONTROLS PART OF JKL

INVASIVE WEED CONTROL

AQUATIC WEED CONTROL

AMENITY WEED MANAGEMENT

CONTAMINATED GROUND REMOVAL

INVASIVE NATIVE &  
NON-NATIVE SPECIES

**ASSURANCE  
STATEMENT**



**NATIONAL SPECIALIST CONTROL SERVICES**

**t: 0330 056 8880**

**e: [contact@knotweed.co.uk](mailto:contact@knotweed.co.uk)  
[environmentcontrols.co.uk](http://environmentcontrols.co.uk)**

Environment Controls is a Trading Name of Japanese Knotweed Ltd

**MANAGEMENT PLAN | SURVEY | TREATMENT | REMOVAL | TRAINING RESOURCES**

## COMPANY INFORMATION

Providing specialist control services for; Invasive Native and Non-Native Weeds (INNS), aquatic weeds, invasive species, amenity weed management, and removal of asbestos contaminated soils.

### NATIONAL COVERAGE

Our experienced field teams are located across England, Scotland, and Wales, providing services nationwide. We have three offices situated in London, Southampton, and Manchester.

### WHO WE HELP

Our services are essential for any individual, business or organisation with property or land affected by invasive weeds. Our clients include Local Authorities and Housing Associations as well as the UK's largest construction companies, developers, property management agents, and land remediation consultants. Our proactive strategy includes liaising with clients at an early stage to assist with their project and financial planning.

### GUARANTEED

Environment Controls is part of Japanese Knotweed Ltd (JKL), a long-standing member of the Property Care Association's (PCA) Invasive Weed Control Group (IWCG). Our works fall in line with the PCA's Knotweed Code of Practice allowing all knotweed remediation work carried out by the company to be backed by guarantee with the option of an insurance backed guarantee if required.

### ABOUT US:

- **Annually we make over 12,000 herbicide visits**
- **Complete 150 excavation projects**
- **For commercial clients and private individuals**
- **On all sizes of projects from £500 to £1.5M**
- **2021 annual turnover was £4M.**

Company Reg No 07428170

VAT No 997 8772 21

UTR No 32646 19580

D-U-N-S© No 216969724

ICO Reference Z2661646

Waste Carriers Licence CBDU152046

**BASIS**



**AMENITY**  
Assured

**JAPANESE  
KNOTWEED  
TO BE  
IGNORED**

**Environment Controls** is a trading name of Japanese Knotweed Ltd.

Japanese Knotweed Ltd has established itself as one of the industry leading companies in the remediation of Japanese knotweed. Providing Surveys and Knotweed Management Plans, including services for chemical treatment programmes and excavation methods. All provided with the option of Insurance Backed Guarantees.

t: 0333 2414 413 e: [contact@knotweed.co.uk](mailto:contact@knotweed.co.uk) [japaneseknotweed.co.uk](http://japaneseknotweed.co.uk)

## INVASIVE SPECIES CONTROL

We don't just treat and remove Japanese knotweed, we offer solutions for effective invasive native and non-native species management - commonly termed INNS. We can provide full method statements for some noxious weeds and our public safety document as evidence of how we deploy our control services.

For aquatic weed management email [contact@knotweed.co.uk](mailto:contact@knotweed.co.uk) to request our Aquatic Weed Assurance Statement, or go online for a list of all target weeds <https://environmentcontrols.co.uk/target-weeds/>

### WHY THIS MATTERS

Some terrestrial species such as Giant hogweed and Hemlock are commonly found in public places such as canal towpaths and woodland areas and have extremely high toxicity levels, causing great harm to humans and wildlife if touched, disturbed or ingested. Other native invasive species such as Common ragwort contain chemicals that are harmful to livestock, and Horsetail if ingested by horses can be fatal.

Whilst not all invasive species are harmful to man and/or the environment, most will require some level of control, or even complete eradication. We use a range of methods specifically chosen to give the best results with the least impact on ecosystems.

### THE RAGWORT CONTROL ACT

In 2003 The Ragwort Control Act came into force which is an Act of the Parliament of the United Kingdom. This act gives the government (through the local authority) the power to require (in writing) a land occupier to take the action required to prevent the spread of injurious weeds.

### MOST COMMON SPECIES

There are currently over 200 invasive species in the UK, below is a list of the most common invasive (including injurious) species that we control.

- **Bamboo**
- **Buddleia**
- **Canadian goldenrod**
- **Common ragwort (below)**
- **Cotoneaster**
- **Field horsetail**
- **Giant hogweed**
- **Giant rhubarb**
- **Goat's rue**
- **Hemlock**
- **Himalayan balsam**
- **Montbretia**
- **Rosebay willowherb**
- **Rhododendron Ponticum**
- **Three-cornered garlic**
- **Variegated yellow archangel**
- **Virginia creeper**
- **Yellow azalea**



## WHY CHOOSE ENVIRONMENT CONTROLS?

We have the expertise, the equipment and fully trained staff to deal with invasive species, including invasive weeds and species such as Oak Processionary Moth.

### WE WORK WITH YOU

You'll benefit from our Specialist Advisory Services, from qualified experts with over 25 years' experience in invasive species management. Our collaborative approach means you can feel confident in receiving the best advice, service and treatment programme, one that has been determined with your requirements, timescales and budget in mind, and most importantly – agreed by you.

### A FULL SUITE OF SERVICES

Let us take care of invasive species control, our methods include:

- **Herbicide treatments**
- **Stem injections**
- **Leaf wiping**
- **Hand pulling**
- **Excavation - for complete eradication**

### TECHNICAL EXPERTISE

As an accredited contractor all surveys are carried out by our CSJK qualified surveyors who will identify and provide a full report of any visible signs of invasive species on the property. Our area technicians and field operatives can cater for any method of control, from herbicide spraying via quadbike or knapsack, to manual techniques if appropriate, or excavation and removal for a complete long-term solution.

### LAND REJUVENATION

Making good land that has been disturbed through treatment is important to consider. We will always assess and consider the impact of treatment on the environment and its natural inhabitants both flora and fauna, and provide an eco-solution to restore the land back to its natural state. This may involve re-seeding areas that were grasslands, or planting species that will encourage natural drainage. Our surveyors will assess the level of regeneration that may be required and look for the best option for that particular environment.

### INDUSTRY STANDARDS

We are a company with the right industry standards and certification. As well as holding all safety accreditations, we are members of BASIS and the Amenity Standard. The BASIS Amenity Assured Scheme sets a benchmark of best proactive methods for weed, pest and disease controls in Amenity situations. Our operations are carried out in accordance to The Wildlife and Countryside Act 1981, The Environmental Protection Act 1990, EPA (Duty of Care) Regulations 1991 and all other relevant legislation, as well as the PCA, INNSA and E.A. Code of Practice guidelines.





## BEST PRACTICE

We advocate using the correct herbicide to suit the species and its environment as best practice. However, Glyphosate remains our herbicide of choice, as it is safe, cost effective and gets the job done!

- We use selective herbicides to control broad leaf species and these herbicides are recommended via an agronomy report by our BASIS specialist advisor.
- We can also implement Controlled Droplet Application (CDA) to reduce the amount of herbicide and water usage in amenity areas.

## CUSTOMER SERVICE

We pride ourselves on our customer service standards, which results in minimum complaints as our consistent 5\* TrustPilot rating confirms, we put clients and customers first. Complaints can be sent to our Operations Director James Stangroom (james.stangroom@knotweed.co.uk), where they will be given priority for response. Complaints will be acknowledged within 24 hours of being received with a resolution communicated within 10 days of receiving the complaint.

## RISK MANAGEMENT

Government bodies release regular reports on pesticide usage within the UK. Data used to create the report is collected from companies using herbicides such as farming, horticulture and the amenity sector.

Risks associated with the use of pesticides in amenity areas, such as parks, is specifically considered as part of the authorisation process. Legally enforceable conditions of use are imposed on the way products can be applied to ensure the public are not exposed to levels of pesticides that would harm health or have unacceptable effects on the environment.

### FULLY COVERED

We hold the following insurance policies:

- **Employers Liability Insurance £10,000,000**
- **Public And Product Liability Insurance £10,000,000**
- **Professional Indemnity Insurance £1,000,000**
- **Hire In Plant £360,000**



## TRAINING MODULES



### **Darren Greatbatch BASIS, MBPR, CSJK, IOSH**

Specialist Advisory Manager (Amenity & Invasive Weeds)

Darren has a long-standing and established career working with local authorities. Holding a CSJK qualification, he is also a member of the BASIS professional register, qualified in hard surfaces, and invasive and injurious weeds. Highly experienced in invasive species identification and methods of control, he provides herbicide recommendations and also undertakes site surveys. Darren is one of JKL's in-house experts, providing training modules on invasive plants and species, including aquatic invasive weeds, herbicide application and health and safety.

### **EXPERT CONSULTANCY SERVICES**

We provide a consultancy service for local authorities, housing associations, property management agencies and facilities companies to assist in efficient and considered weed management designed to keep expenditure levels down. A full quotation for this service can be provided on request.

### **CLIENT STAFF TRAINING AND IDENTIFICATION**

In addition to the management and eradication of invasive weeds, JKL can provide your teams with a series of knotweed and invasive weed identification training sessions, delivered either onsite or online. Training includes information on the different species, keeping safe when handling harmful weeds (such as Giant hogweed), and details about different methods of control.

### **FORMAL TRAINING SESSIONS**

We also offer formal CPD style training including certification for your staff. Upon an initial discussion to ascertain the level of training required, we will provide a quotation on request.

### **INVASIVE WEEDS LEGISLATION**

Legislation and government directives place a growing emphasis to control the spread of invasive plants in the UK. As a result, we are seeing increasing requirements for other invasive weed control work, and we train our staff to identify and treat all Invasive Non-Native Weeds (INNS).

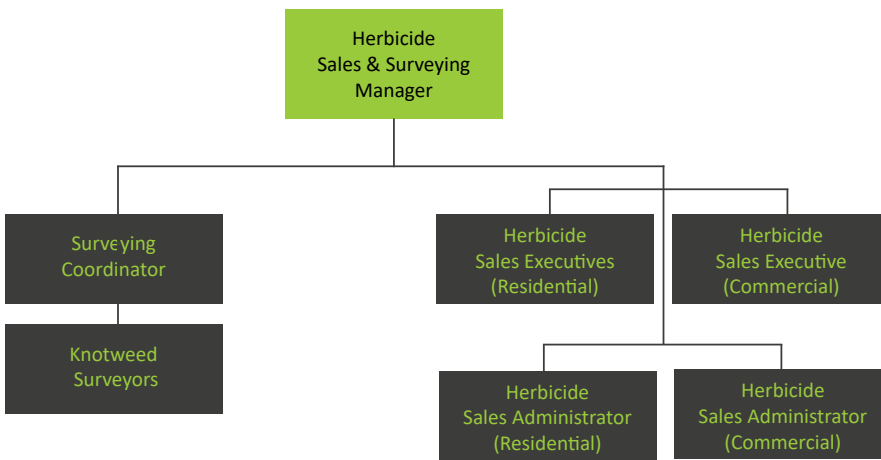


## OUR TEAMS YOUR RESOURCE

### HERBICIDE SURVEYING AND SALES TEAM

All surveys, management plans and herbicide treatment quotations are produced and delivered by our Herbicide Sales Team. They receive your enquiry for each site identified as containing a target INNS species. They organise a survey and deliver a Management Plan and works quotation to you. Our surveyors are located across the UK allowing us to cover all areas of the country.

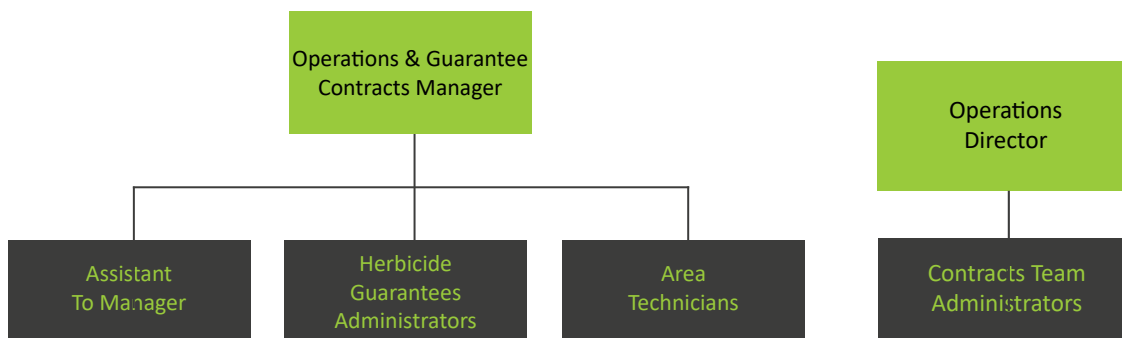
The team aim to conduct a site survey within 3days of your enquiry and return your Management Plan and works quotation within 3 days of the survey.



### OPERATIONS HERBICIDE TEAM

The undertaking and delivery of the company’s herbicide programmes is managed by the Herbicide and Guarantee Operations Team. They coordinate access for treatment visits with you and maintain records of the works. Area Technicians are located across the UK allowing us to cover all areas of the country.

On completion of a site you have the ability to digitally sign a Site Visit Record (SVR) which contains the legally required Pesticide Application Record.



### OPERATIONS CONTRACTS TEAM

The company employs a Contracts Team who work with our clients to assist them with any questions they have regarding their contract. The team is responsible for setting up contracts and assisting clients transfer guarantees, Knotweed Management Plans and Insurance Backed Guarantees when there is a change of beneficiary.



## INDUSTRY AFFILIATIONS

### AMENITY ASSURED

The BASIS Amenity Assured Scheme sets a benchmark of best practice methods for weed, pest and disease controls in Amenity situations.

Companies which achieve the Amenity Assured Scheme demonstrate that their operating methods meet the compliance criteria for achievement of weed, pest and disease control through a variety of integrated approaches. The methods respect and incorporate high regards for safety to the public, the environment, for water protection and cost effective programmes of work.

The Scheme Standard is defined by BASIS in conjunction with the Amenity Forum, City & Guilds Land Based Services (NPTC) and the National Association of Agricultural Contractors. The Amenity Assured Scheme is recognised by the Chemicals Regulation Division which has responsibility for the implementation and control of UK pesticides legislation.

### BASIS

The BASIS Professional Register requires members to:

- Hold a recognised qualification;
- Agree to a written Code of Professional Ethics;
- And, most importantly, to commit to a programme of Continuing Professional Development (CPD) so that they stay up-to-date with all the latest developments

### AMENITY FORUM

The Amenity Forum is the UK based, industry led voluntary initiative for the promotion of “best practice” principles within the amenity sector when using pesticides, herbicides, fungicides, insecticides, algaecides and other products to control pests and diseases in this diverse sector.

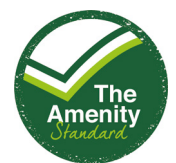
Membership of the Amenity Forum is open to individuals and organisations involved in weed and pest control in the sector. Committed to driving up standards and promoting best practice. The Forum is totally a membership organisation relying on subscriptions to fund its activities as the voice for the sector. Every member has an equal vote where decisions are required.

### THE AMENITY STANDARD

A significant UK wide development designed to reassure the public of the safety and effectiveness of methods used for weed, pest and disease management. The Amenity Forum is the UK’s Voluntary Initiative fully recognised by Government, and its main objective is to promote best practice across the sector. It seeks to do this by advocating a fully integrated approach to weed, pest and disease management, tailoring solutions to meet specific situations and making use of the correct techniques. Using approved chemical and non chemical, to produce the most effective and efficient outcome whilst seeking to create safe and healthy amenity spaces fit for purpose.

### PROPERTY CARE ASSOCIATION (PCA) INVASIVE WEED CONTROL GROUP

This provides consumers with a means of identifying specialist vetted contractors and consultants who can undertake invasive weed control services. Affiliation enables contractors to provide Insurance Backed Guarantees. Accreditation to this scheme demonstrates our professionalism in the industry of invasive weed management, treatment and removal.



### TRUSTMARK

TrustMark is the only Government endorsed scheme for trades in and around the home. They award registered firms with their accreditation after thorough vetting and on-site inspections to ensure the firm is raising industry standards. TrustMark is the only “find a tradesperson” scheme to cover all 3 cornerstones of quality: good trading practices, good customer service, technical competence.



### CONSTRUCTIONLINE GOLD

As a verified member of Construction-line, buyers will recognise that our company aligns to industry and government standards and is ‘fit-to-supply’ to the construction industry. As ‘Gold Members’ we can demonstrate a ‘high professional standard’ to our clients. We are verified against an extended PQQ (covering Environmental Management, Equalities and Diversity, and Quality Management, and ensuring legislative compliance), and possess a valid SSIP certificate.



### BUILDERS PROFILE

Used by companies such as Balfour Beatty and Wates Group, Builder’s Profile is the open-access Common Database service providing compliance and PQQ (pre-qualification questionnaire) information to the construction industry. Our secure Common Database enables subcontractors and suppliers to easily maintain and share information.



### THE CONTRACTORS HEALTH AND SAFETY ASSESSMENT SCHEME (CHAS)

Japanese Knotweed Ltd are registered contractors to the CHAS Government backed and SSIP Health and Safety scheme, which demonstrates our proficiency to Public, Company, Employer and Employee Health and Safety.



### SAFECONTRACTOR

The SafeContractor scheme provides a health and safety audit service for contractors who want to reassure their clients that health and safety is being handled correctly and sufficiently on their sites. Accreditation to this scheme demonstrates our proficiency to Public, Company, Employer and Employee Health and Safety.



### ACCLAIM HEALTH & SAFETY

Japanese Knotweed Ltd are accredited by Acclaim Health and Safety, which is the SSIP member scheme provided by Supplier Assessment Services Ltd. Acclaim used the expertise and knowledge of NEBOSH and SSIP assessor qualified professionals to verify our compliance with health and safety legislation.



### SUPPLY CHAIN SUSTAINABILITY SCHOOL

The School is an award-winning industry-wide collaboration, led by their Partners and Members whose Vision for the School is to be “A world-class collaboration to enable a sustainable built environment”.

